

# CORFEX® - standard program



## Crossbars

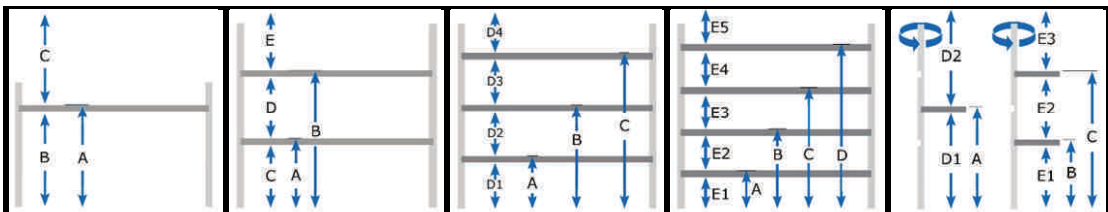


dimension (mm)	80 x 80	80 x 100	75 x 80	75 x 100
material	IPPC wood	IPPC wood	LVL-Non Wood	LVL-Non Wood
Order No.	CFQ.80.80	CFQ.80.100	CFQ.75.80.NW	CFQ.75.100.NW
dyn. load capacity	150 kg	150-210 kg	150 kg*	150-210 kg*
weight approx.	7 kg	8,5 kg	6,5 kg	8 kg

\* The exact values of maximum load capacity are still pending. As long as at least the load capacity of the solid wood crossbars can be guaranteed for sure.



## supports



function	1 level	2 levels	2 levels/load.sec.	load securing	1/2 levels
for crossbars	all	all	all	75-80x80	75-80x80
order no.	CFS.80.100.1	CFS.80.100.2	CFS.80.100.3	CFS.80.80.4	CFS.80.80.1.2
load-bearing capacity load&hold force dyn.	max.	E1 max. E2≤150kg	E1 max. E2+E3≤150 kg	each crossbar 500 daN	≤150 kg
weight approx.	1,9 kg	2,3 kg	2,2 kg	2,1 kg	2,3 kg

### heights and intermediate measures in mm

A	≈1230	≈820	≈600	≈415	≈1235
B	≈1130	≈1640	≈1220	≈900	≈815
C	≈1150	≈720-740	≈1840	≈1400	≈1630
D / D1 - D4	—	≈720-740	≈515	≈1880	≈1145
E / E1 - E5	—	≈720-740	—	≈335/500	≈730

Of course, we also manufacture special models for you and we gladly implement your individual requirements!

All measurements refer to an ISO container with an inside height of 2380 mm (standard TEU).

All given measurements can be defeated by low divergences. Mistakes and changes reserved.

\*All prices net ex works plus 2% logistics surcharge, plus shipping/packaging and VAT as required.

Minimum purchase 40 pieces per support type. State of validity: 01.10.2019



# CORFEX® - system accessories



**UPLash**  
SupportFoot

**form fit loading  
& use lashing eyes!**



effective height	100 mm
order no.	CFZ.UL.100
load capacity	≈500 kg
weight approx.	0,23 kg
material	steelsheet galv.

The **UPLash** ensures in beads with lashing eyes form-fitting. The support shortened by 10 cm is installed without load loss and the lashing point remains usable.



## Spacers

to compensate broad-loomed container widths from 10 to 40 mm  
1 PU = 10 pieces



thickness	10 mm	15 mm	20 mm
order no.	CFZ.DSL.10	CFZ.DSL.15	CFZ.DSL.20
material	OSB	OSB	OSB

## T-connector

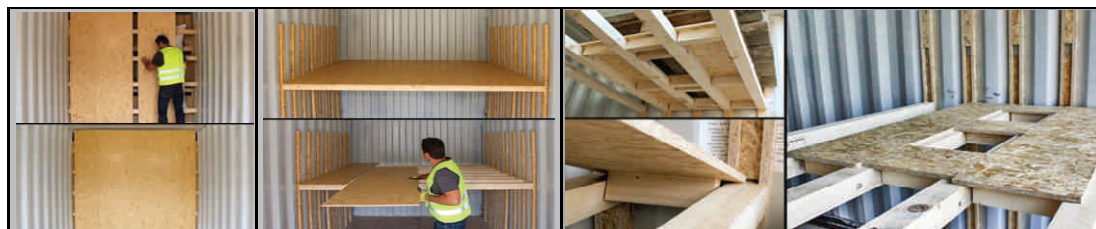
to link up CORFEX restraint and bump systems to secure high cargo masses (≥20 to.)  
1 PU = 12 pieces



for crossbars	75/80x80
order no.	CFZ.TV.3520
material	OSB/timber

## Panels + Dunnage aids

from OSB III



function	bulkhead	dividing floor			inlay board 1	inlay board 2
comment	4-parts, spigot&groove				for loading 4-way-pallets (EPAL) across	
order no.	CFZ.TW.12	CFZ.TBH.12/15/18			CFZ.EB.1250	CFZ.EB.200
dimensions in mm	2300 x 2365	2330 x 2500 (length optionally divisible to 1200/1300)			1250 x 275 x 15	200 x 275 x 15
weight approx. (kg)	≈ 26,0	≈ 40,0 (12mm)	≈ 48,0 (15mm)	≈ 57,0 (18mm)	≈ 4,0	≈ 1,0

\*All prices net ex works plus 2% logistics surcharge, plus shipping/packaging and VAT as required.  
All given measurements can be defeated by low divergences. Mistakes and changes reserved.  
Original products may look different from the picture. State of validity: 01.10.2019

